






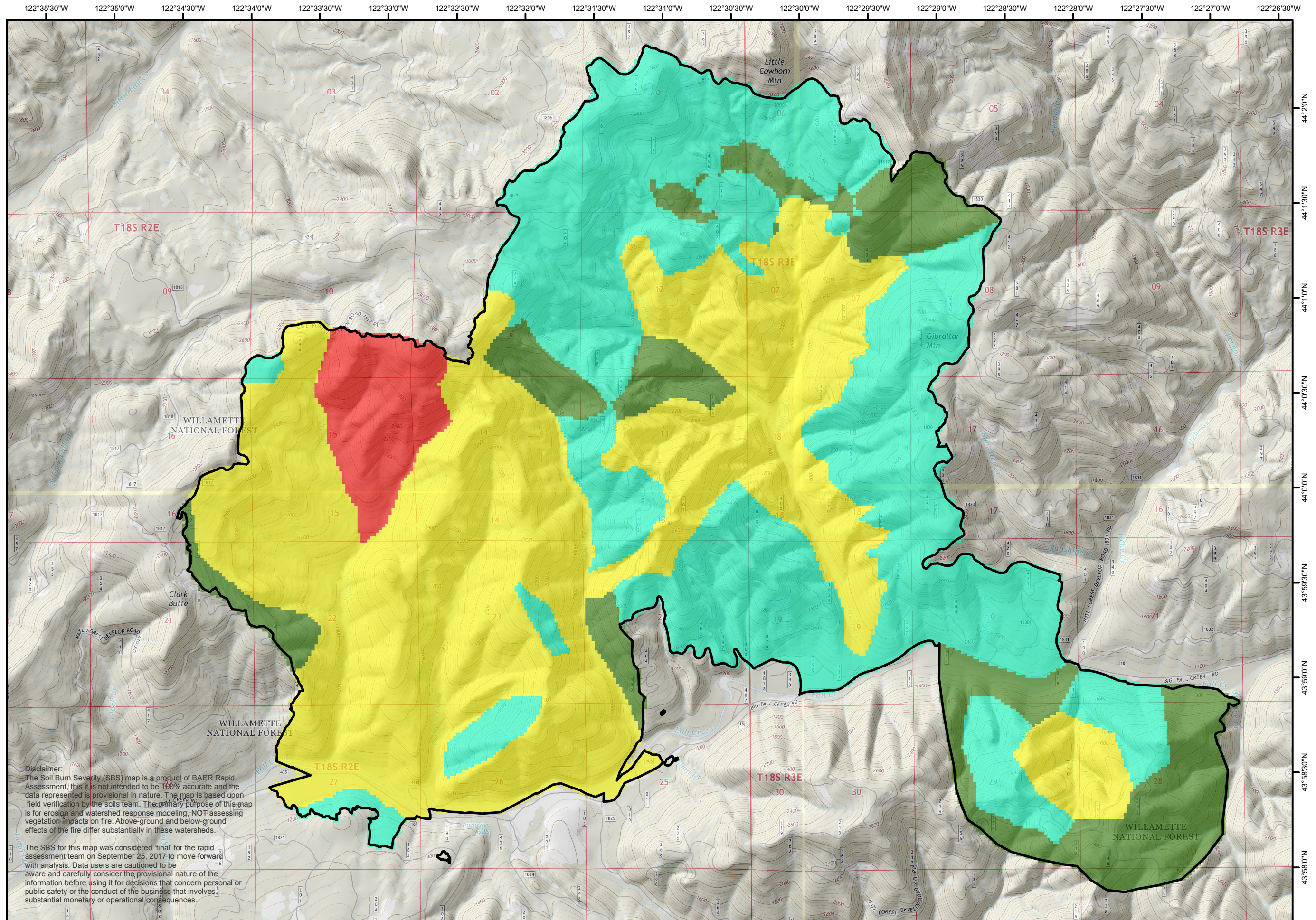
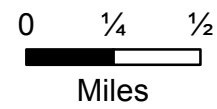
Jones Soil Burn Severity

BAER
OR-WIF-170298

Sept. 25, 2017

Legend

-  Jones Fire Perimeter
- Soil Burn Severity (SBS)**
-  Unburned / Very Low SBS
-  Low SBS
-  Moderate SBS
-  High SBS



Disclaimer:
The Soil Burn Severity (SBS) map is a product of BAER Rapid Assessment, this is not intended to be 100% accurate and the data represented is provisional in nature. The map is based upon field verification by the soils team. The primary purpose of this map is for erosion and watershed response modeling, NOT assessing vegetation impacts on fire. Above-ground and below-ground effects of the fire differ substantially in these watersheds.

The SBS for this map was considered 'final' for the rapid assessment team on September 25, 2017 to move forward with analysis. Data users are cautioned to be aware and carefully consider the provisional nature of the information before using it for decisions that concern personal or public safety or the conduct of the business that involves substantial monetary or operational consequences.