



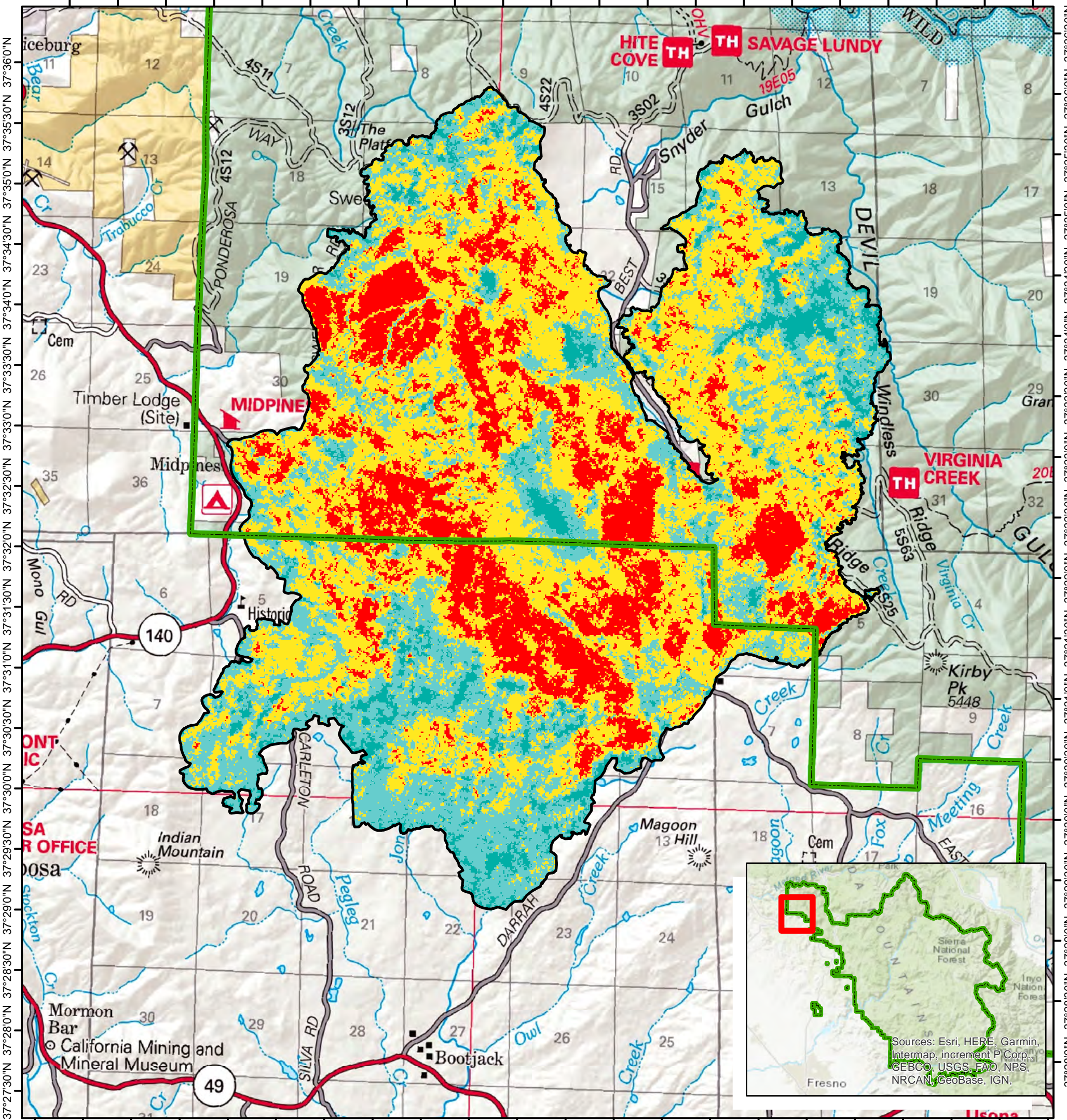
SOIL BURN SEVERITY

OAK FIRE BAER ASSESSMENT 2022

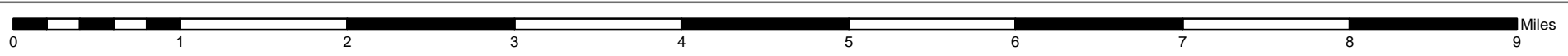


Burn Area
Emergency
Response

119°57'0"W 119°56'0"W 119°55'0"W 119°54'0"W 119°53'0"W 119°52'0"W 119°51'0"W 119°50'0"W 119°49'0"W 119°48'0"W 119°47'0"W



Sources: Esri, HERE, Garmin, Intermap, increment P Corp., GEBCO, USGS, FAO, NPS, NRCAN, GeoBase, IGN,



Oak Fire Soil Burn Severity :

| Soil Burn Severity | % | Total Acres (Approx.) | Acres of Soil Burn Severity by Land Ownership | | |
|--------------------|-----|-----------------------|---|---------------------------|-----------|
| | | | USDA Forest Service | Bureau of Land Management | Private |
| High | 21 | 4,003.41 | 2,324.07 | 23.46 | 1,655.88 |
| Moderate | 45 | 8,800.17 | 4,569.92 | 17.05 | 4,213.19 |
| Low | 27 | 5,279.29 | 1,763.29 | 12.50 | 3,503.50 |
| Unburned | 7 | 1,397.42 | 546.97 | 1.83 | 848.62 |
| Grand Total | 100 | *19,480.29 | 9,204.26 | 54.84 | 10,221.20 |

*Total size of fire is different than that reported by the Incident because the BAER assessment perimeter includes several unburned islands (totaling approx. 240 acres) within the perimeter of the fire.

- Oak Fire Perimeter 8/4/2022
- Sierra National Forest Boundary
- Bureau of Land Management Land
- Private Land
- National Forest Land



Map Date: 8/13/2022

This map is a product of a Burned Area Emergency Response (BAER) Team rapid assessment. This product is reproduced from geospatial information prepared by the USDA Forest Service. Geospatial information and GIS product accuracy may vary. Using GIS products for purposes other than those for which they were created may yield inaccurate or misleading results. USDA Forest Service reserves the right to correct, update, modify or replace GIS products without notification. Oak Fire soil burn severity derived from 8/14/2022 Landsat 8 BARC256.