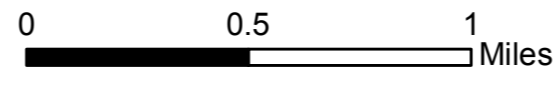
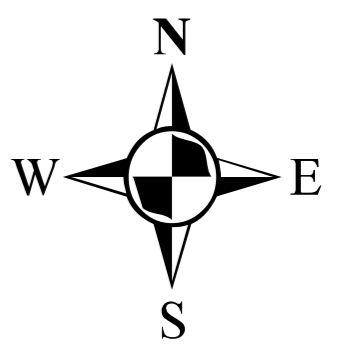











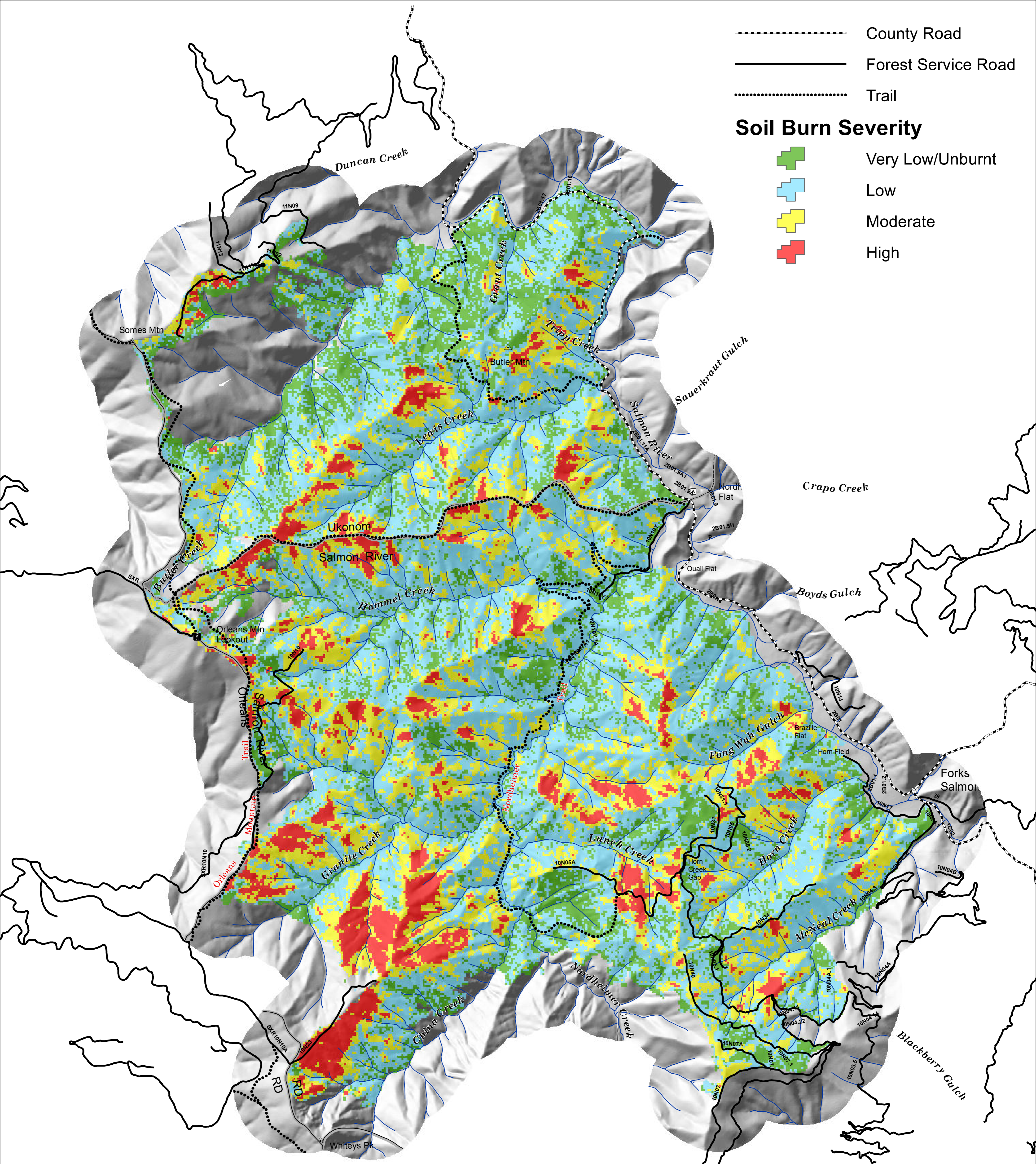
Butler BAER Assessment Soil Burn Severity

Klamath National Forest & Six Rivers National Forest
24 September 2013



-  County Road
-  Forest Service Road
-  Trail

- Soil Burn Severity**
-  Very Low/Unburnt
 -  Low
 -  Moderate
 -  High



Burned Area Reflectance Classification (BARC) imagery was obtained on September 14, 2013 and the fire perimeter as of September 18, 2013. The fire perimeter was the most up-to-date when the Team started their analysis and best matched the BARC imagery date. This data was used as the Team's starting point for field validation of burn severity.