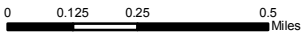
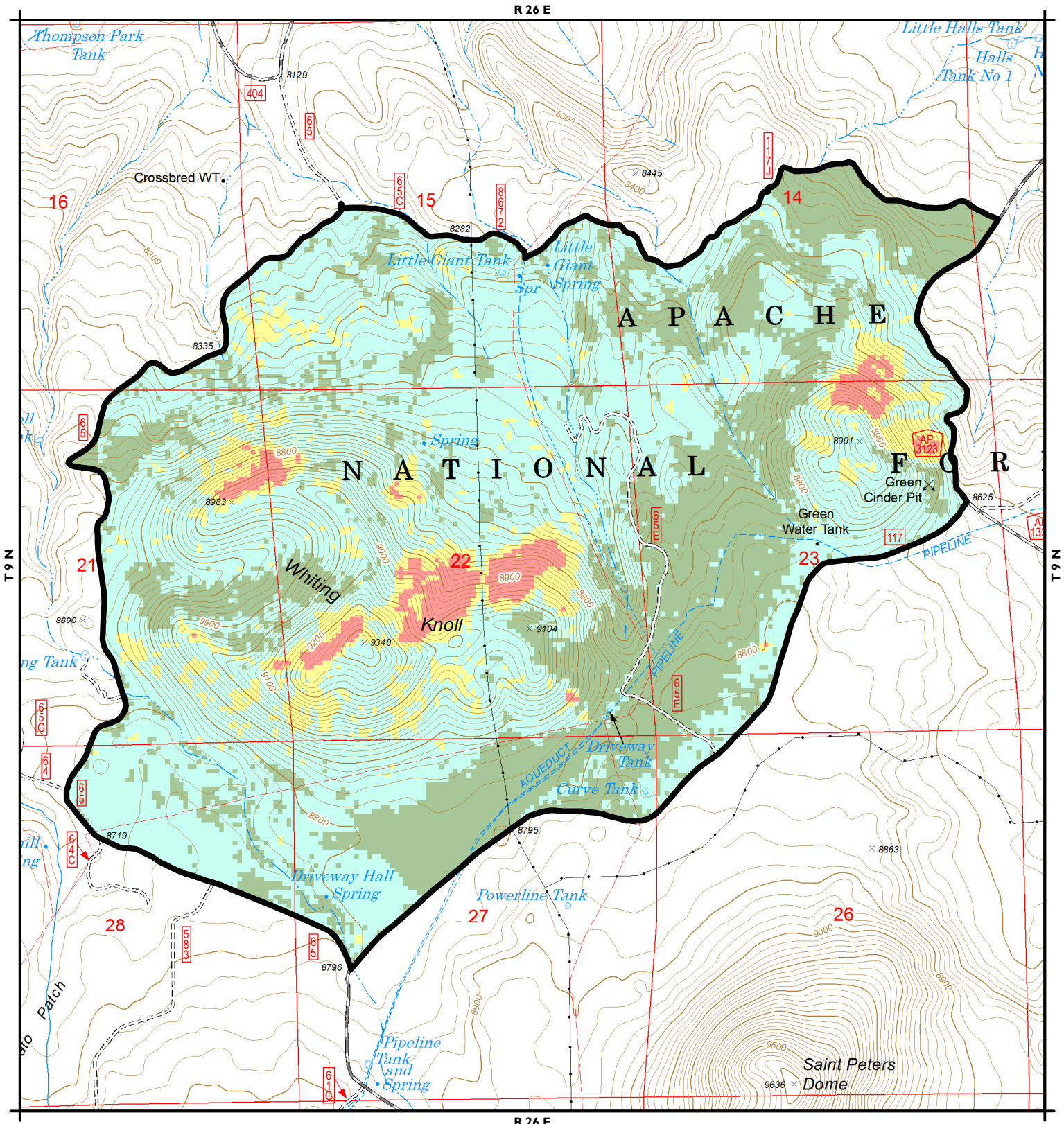




Whiting Knoll Fire Soil Burn Severity Map

Apache-Sitgreaves National Forests - Springerville Ranger District



Disclaimer

The USDA Forest Service uses the most current and complete data available. GIS data and product accuracy may vary. Using GIS products for purposes other than those for which they were intended may yield inaccurate or misleading results. The USDA Forest Service reserves the right to correct, update, modify, or replace GIS products without notification. This map is not a legal land line or ownership document. Public lands are subject to change and leasing, and may have access restrictions; check with local offices. Obtain permission before entering private land.

Legend

Whiting Knoll Fire Perimeter

Soil Burn Severity

- High - 65 acres or 3%
- Low - 1,331 acres or 58%
- Moderate - 183 acres or 8%
- Unburned - 706 acres or 31%

ARIZONA
Apache County

N

