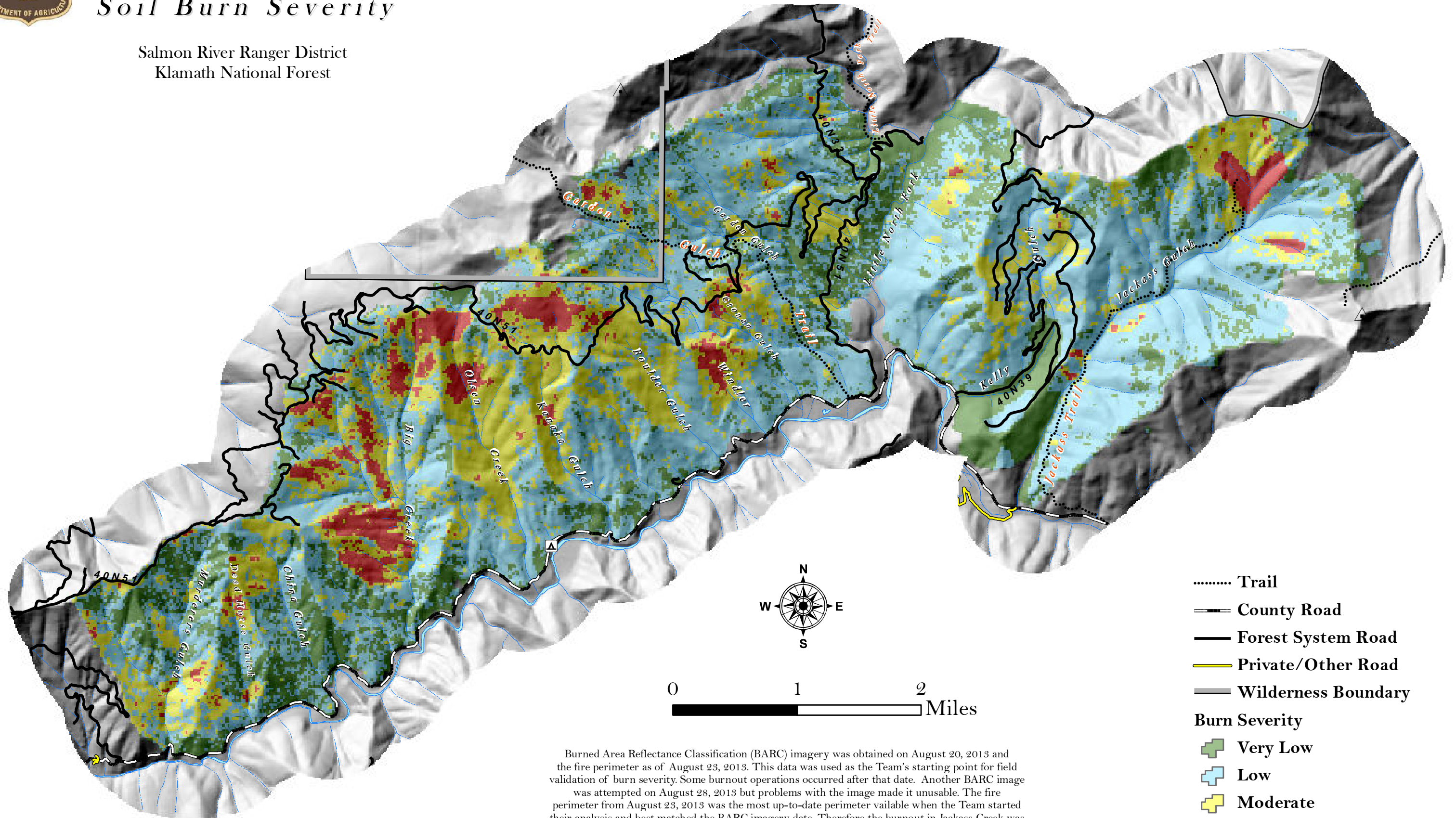




Salmon River Complex Soil Burn Severity

Salmon River Ranger District
Klamath National Forest



Burned Area Reflectance Classification (BARC) imagery was obtained on August 20, 2013 and the fire perimeter as of August 23, 2013. This data was used as the Team's starting point for field validation of burn severity. Some burnout operations occurred after that date. Another BARC image was attempted on August 28, 2013 but problems with the image made it unusable. The fire perimeter from August 23, 2013 was the most up-to-date perimeter available when the Team started their analysis and best matched the BARC imagery date. Therefore the burnout in Jackass Creek was then digitized in and severity estimated based on field reports.

- Trail
- == County Road
- Forest System Road
- Private/Other Road
- Wilderness Boundary
- Burn Severity**
- Very Low
- Low
- Moderate
- High