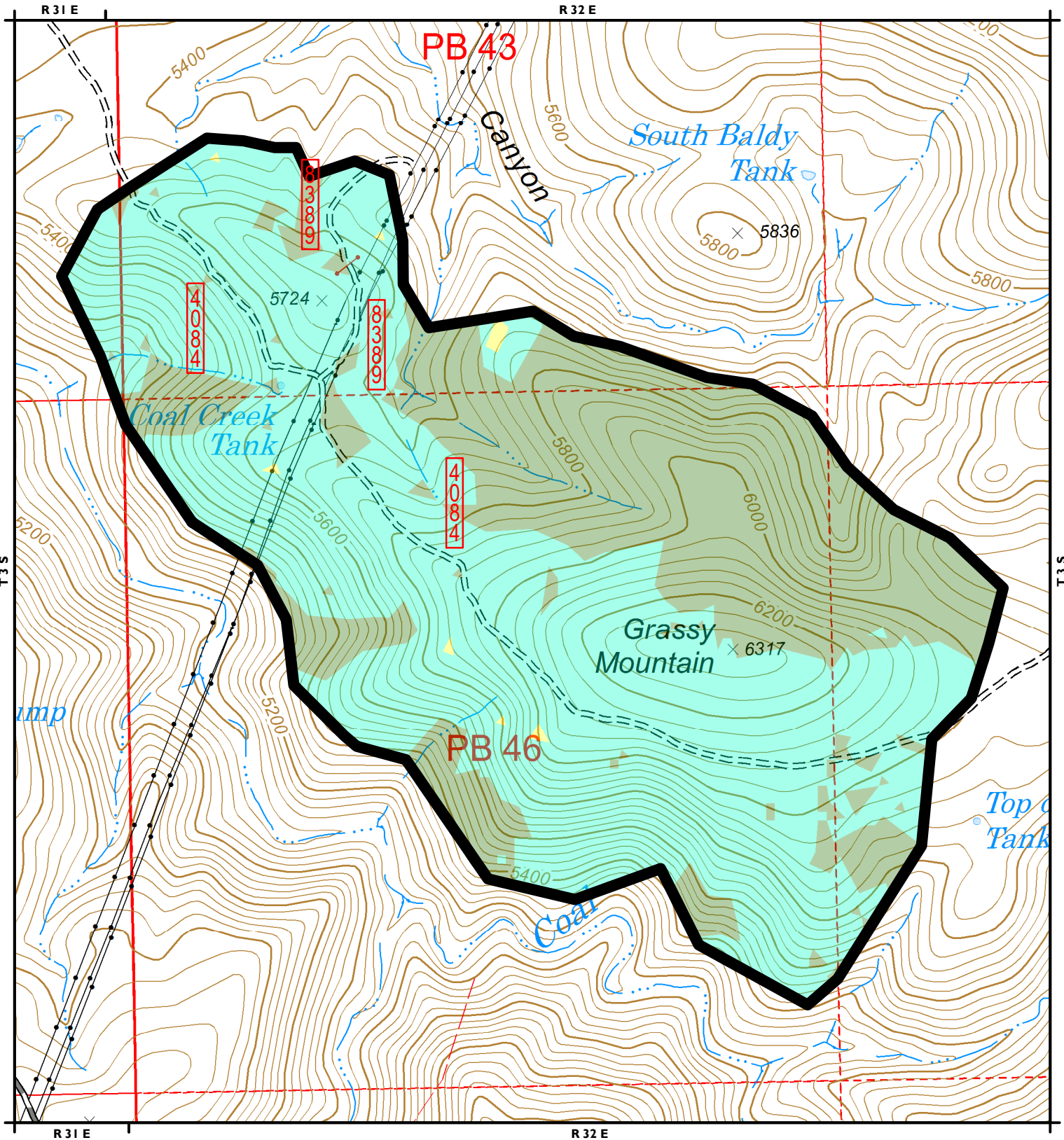




Grassy Fire Burn Severity

Apache-Sitgreaves National Forests - Clifton Ranger District



0 0.05 0.1 0.2 Miles

Disclaimer

The USDA Forest Service uses the most current and complete data available. GIS data and product accuracy may vary. Using GIS products for purposes other than those for which they were intended may yield inaccurate or misleading results. The USDA Forest Service reserves the right to correct, update, modify, or replace GIS products without notification. This map is not a legal land line or ownership document. Public lands are subject to change and leasing, and may have access restrictions; check with local offices. Obtain permission before entering private land.

Legend

Fire Perimeter

Burn Severity

- Low - 352 acres or 64%
- Moderate - 1 acre or <1%
- Unburned - 198 acres or 36%

