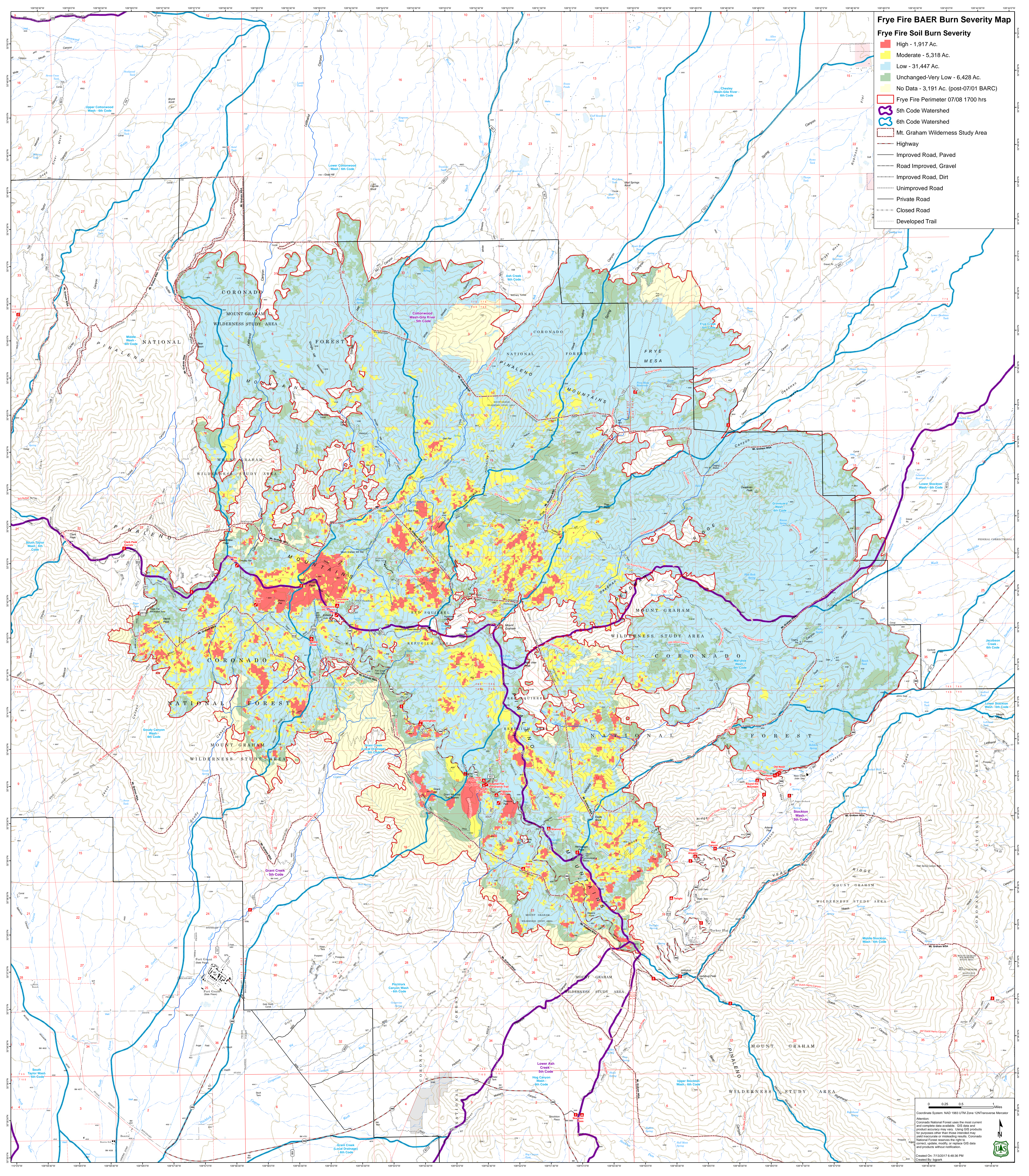


# Frye Fire BAER Burn Severity Map

- ## Frye Fire Soil Burn Severity
- High - 1,917 Ac.
  - Moderate - 5,318 Ac.
  - Low - 31,447 Ac.
  - Unchanged-Very Low - 6,428 Ac.
  - No Data - 3,191 Ac. (post-07/01 BARC)
- ## Legend
- Frye Fire Perimeter 07/08 1700 hrs
  - 5th Code Watershed
  - 6th Code Watershed
  - Mt. Graham Wilderness Study Area
  - Highway
  - Improved Road, Paved
  - Road Improved, Gravel
  - Improved Road, Dirt
  - Unimproved Road
  - Private Road
  - Closed Road
  - Developed Trail



0 0.25 0.5 1 Miles

Coordinate System: NAD 1983 UTM Zone 12N Transverse Mercator

Disclaimer: Coronado National Forest uses the most current and complete data available. GIS data and product accuracy may vary. Using GIS products for purposes other than those intended may yield inaccurate or misleading results. Coronado National Forest reserves the right to correct, update, modify, or replace GIS data and products without notice.

Created On: 7/13/2017 6:48:36 PM  
Created By: gspack