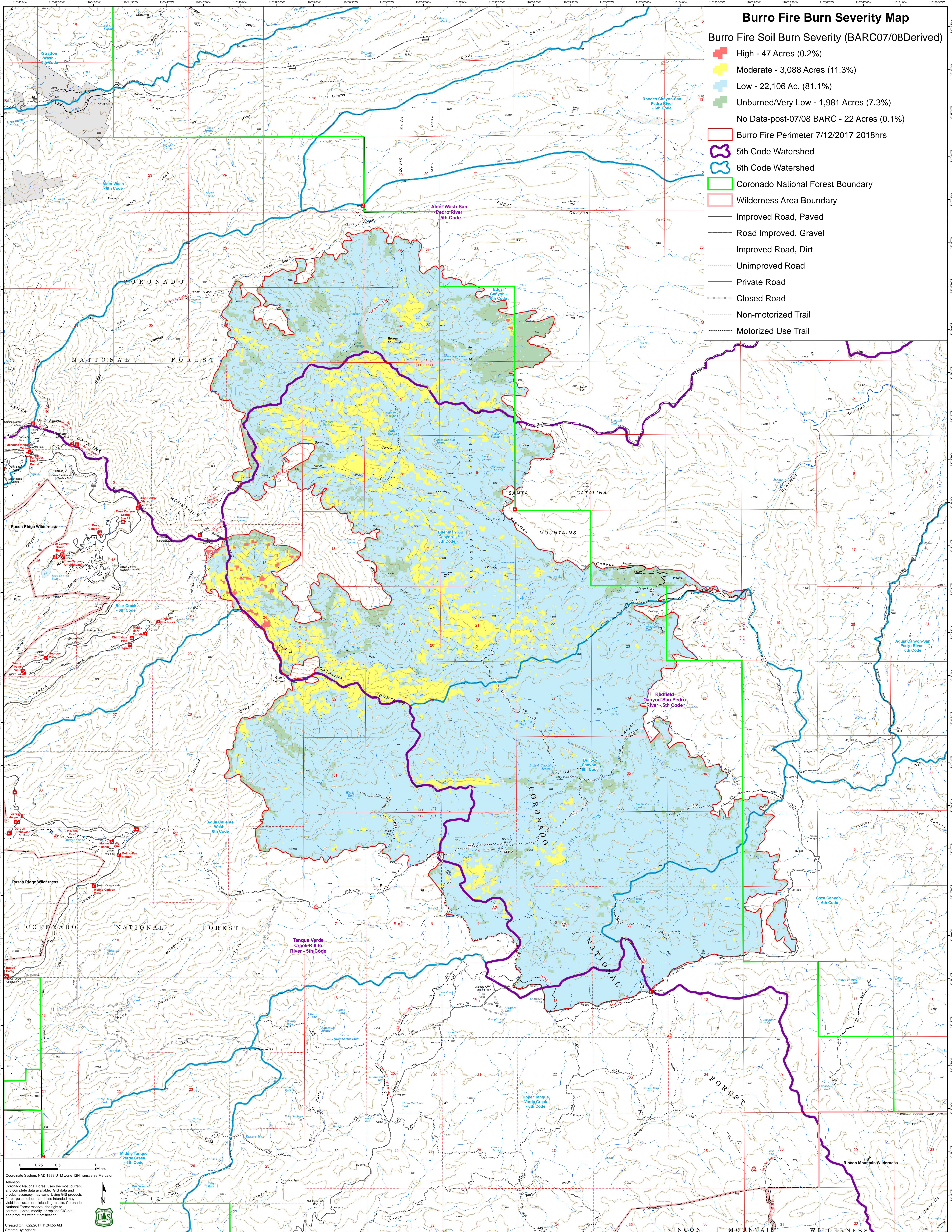


# Burro Fire Burn Severity Map

Burro Fire Soil Burn Severity (BARC07/08Derived)

- High - 47 Acres (0.2%)
- Moderate - 3,088 Acres (11.3%)
- Low - 22,106 Ac. (81.1%)
- Unburned/Very Low - 1,981 Acres (7.3%)
- No Data-post-07/08 BARC - 22 Acres (0.1%)

- Burro Fire Perimeter 7/12/2017 2018hrs
- 5th Code Watershed
- 6th Code Watershed
- Coronado National Forest Boundary
- Wilderness Area Boundary
- Improved Road, Paved
- Road Improved, Gravel
- Improved Road, Dirt
- Unimproved Road
- Private Road
- Closed Road
- Non-motorized Trail
- Motorized Use Trail



0 0.25 0.5 1 Miles

Coordinate System: NAD 1983 UTM Zone 12N Transverse Mercator

Attention: Coronado National Forest uses the most current and complete data available. GIS data and product accuracy may vary. Using GIS products for purposes other than those intended may yield inaccurate or misleading results. Coronado National Forest reserves the right to correct, update, modify, or replace GIS data and products without notification.

Created On: 7/22/2017 11:04:55 AM  
Created By: JACAP