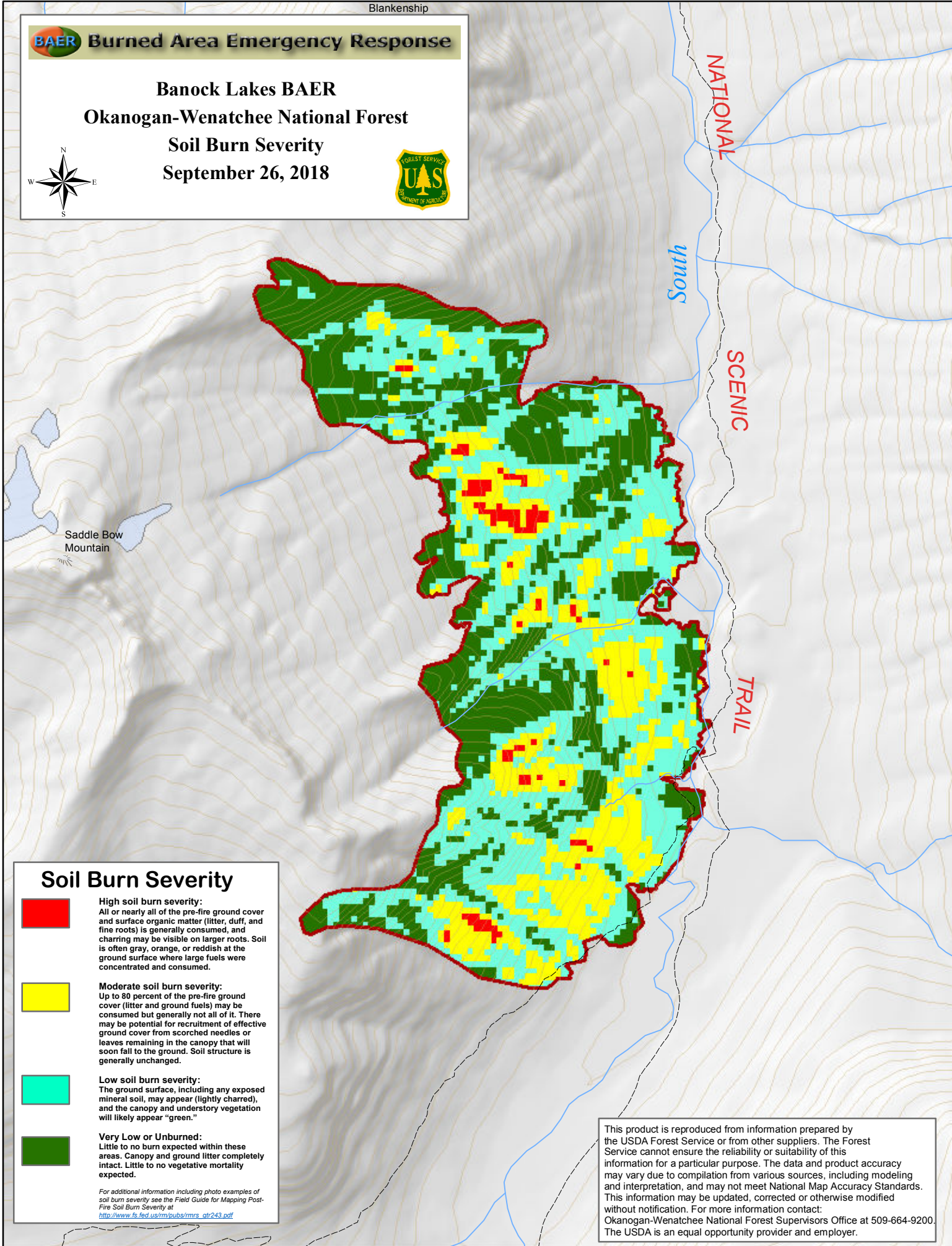
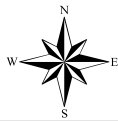




# Burned Area Emergency Response

## Banock Lakes BAER Okanogan-Wenatchee National Forest Soil Burn Severity September 26, 2018



Saddle Bow Mountain

### Soil Burn Severity



**High soil burn severity:**  
All or nearly all of the pre-fire ground cover and surface organic matter (litter, duff, and fine roots) is generally consumed, and charring may be visible on larger roots. Soil is often gray, orange, or reddish at the ground surface where large fuels were concentrated and consumed.



**Moderate soil burn severity:**  
Up to 80 percent of the pre-fire ground cover (litter and ground fuels) may be consumed but generally not all of it. There may be potential for recruitment of effective ground cover from scorched needles or leaves remaining in the canopy that will soon fall to the ground. Soil structure is generally unchanged.



**Low soil burn severity:**  
The ground surface, including any exposed mineral soil, may appear (lightly charred), and the canopy and understory vegetation will likely appear "green."



**Very Low or Unburned:**  
Little to no burn expected within these areas. Canopy and ground litter completely intact. Little to no vegetative mortality expected.

For additional information including photo examples of soil burn severity see the Field Guide for Mapping Post-Fire Soil Burn Severity at [http://www.fs.fed.us/rm/pubs/mrs\\_qtr243.pdf](http://www.fs.fed.us/rm/pubs/mrs_qtr243.pdf)

This product is reproduced from information prepared by the USDA Forest Service or from other suppliers. The Forest Service cannot ensure the reliability or suitability of this information for a particular purpose. The data and product accuracy may vary due to compilation from various sources, including modeling and interpretation, and may not meet National Map Accuracy Standards. This information may be updated, corrected or otherwise modified without notification. For more information contact: Okanogan-Wenatchee National Forest Supervisors Office at 509-664-9200. The USDA is an equal opportunity provider and employer.